

Science & Society in Dialogue & Collaboration
for Sustainable Water Management &
Adaptation to Global Change Impacts
in 4 Case Study Mediterranean River Basins



OBJECTIVES:

Design realistic water management options and an adaptation plan for each case study river basin

Foster environmental and societal resilience at river basin level through an integrated, stakeholder-driven water management planning

Enhance knowledge on water governance through collaboration between science and civil society

Strengthen public awareness on the urgency and relevance of tackling the effects of global change, as well as community empowerment towards adaptive water management

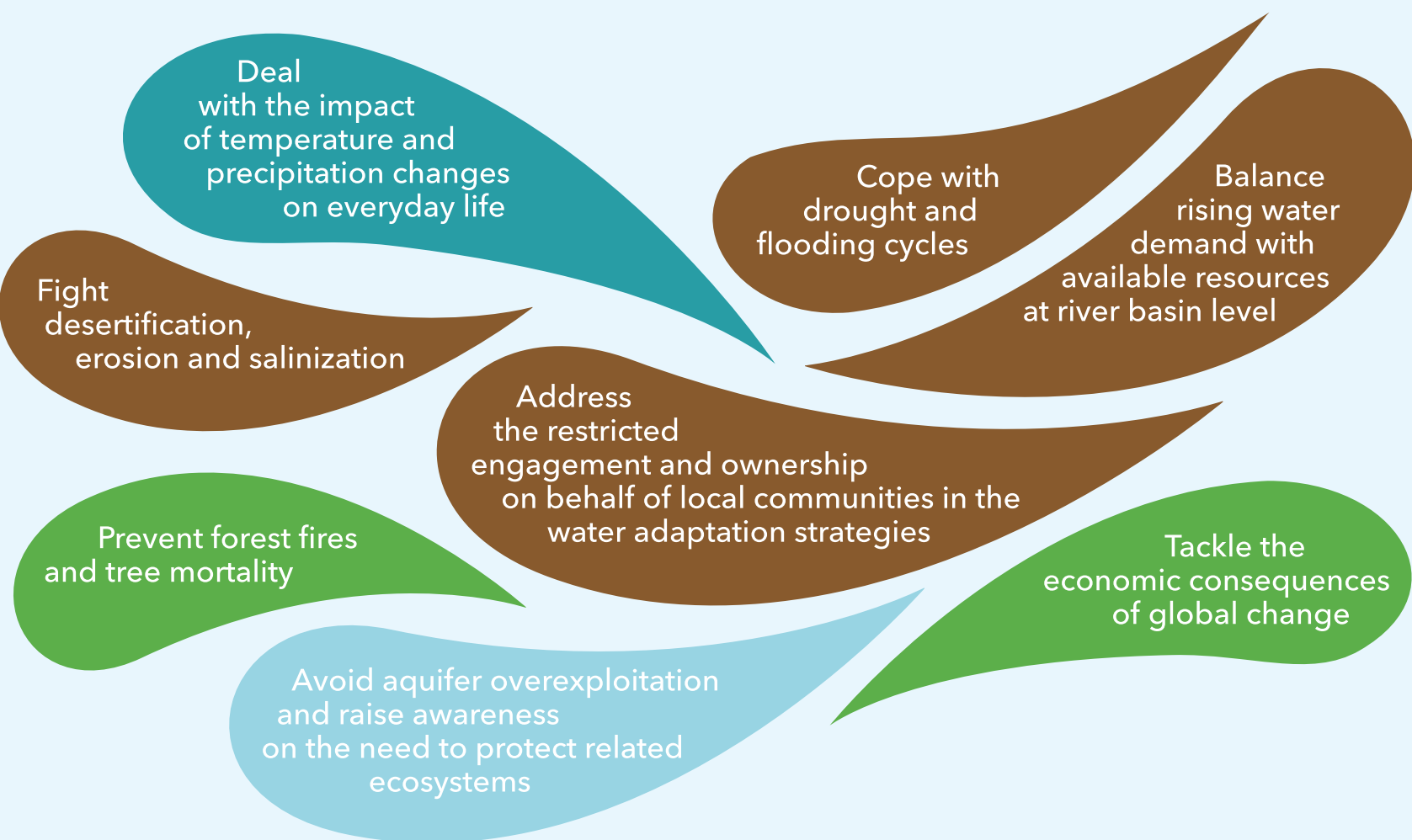
Share common challenges, lessons learned and best practices on adaptive water management planning in the Mediterranean

Transfer scientific results to policy options for response measures to face global change impacts

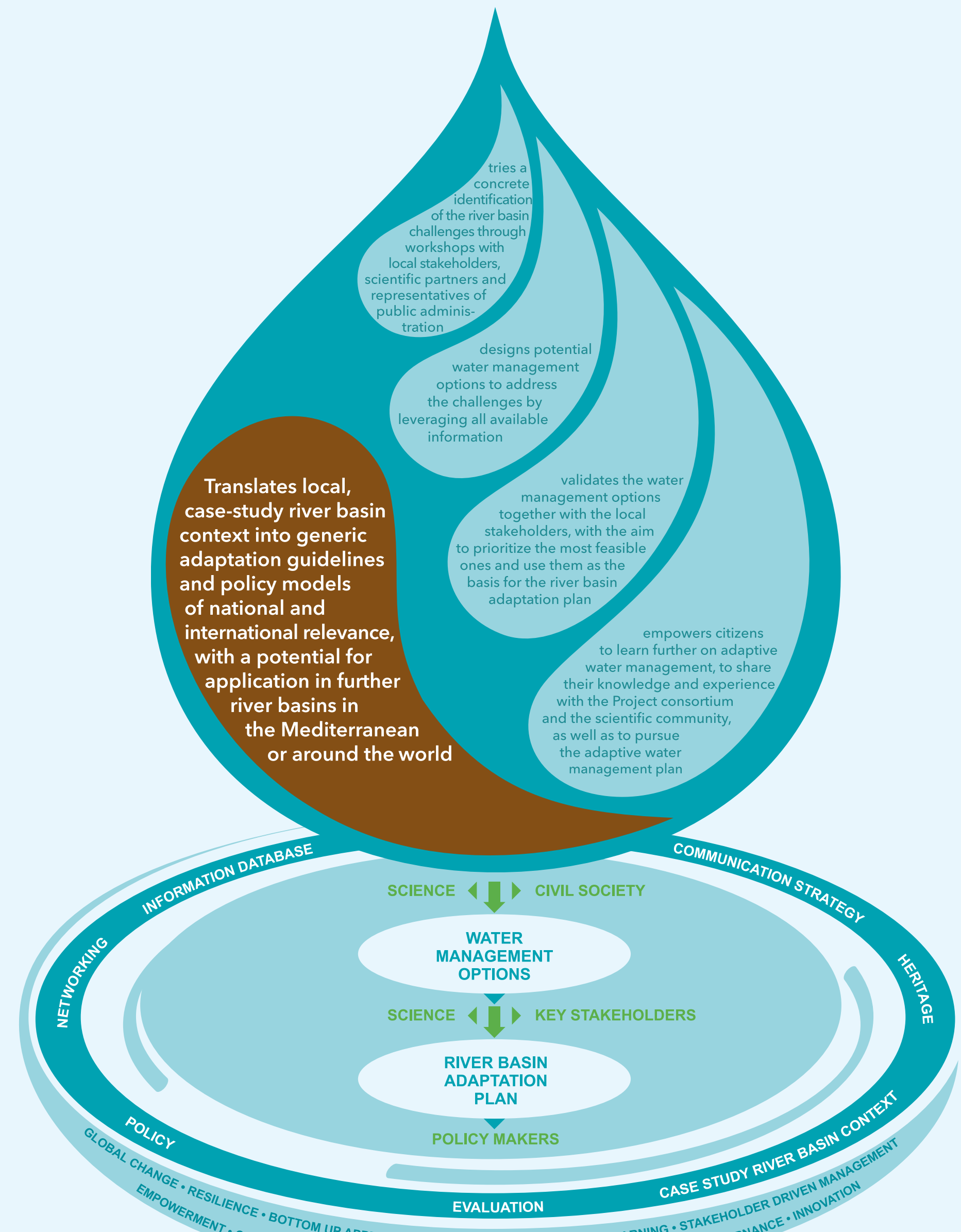
**Shared Learning
for Multi-level Impact**

Information, Knowledge & Experience Exchange
at Local, Project & European Level

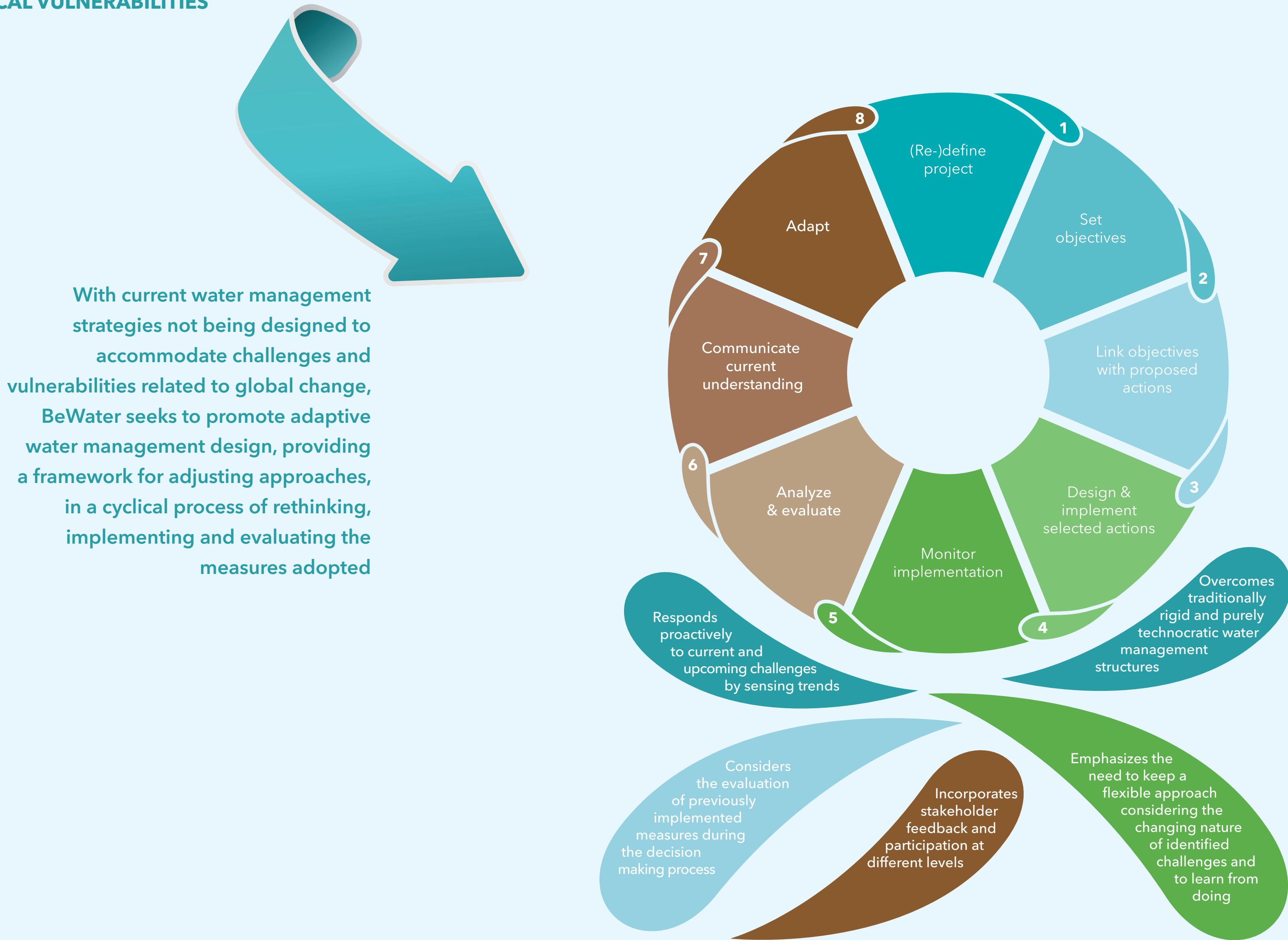
Contact us!



GLOBAL CHANGE CHALLENGES IN THE MEDITERRANEAN:
FACING WATER-RELATED SOCIO-ECOLOGICAL VULNERABILITIES



LEVERAGING THE ADVANTAGES OF ADAPTIVE WATER MANAGEMENT:
BEWATER METHODOLOGICAL APPROACH AND OUTCOMES



ADAPTIVE WATER MANAGEMENT FOR BUILDING RESILIENCE IN THE
MEDITERRANEAN RIVER BASINS AGAINST GLOBAL CHANGE IMPACTS